



Great Lakes Fruit, Vegetable & Farm Market EXPO Michigan Greenhouse Growers EXPO

December 10-12, 2019

DeVos Place Convention Center, Grand Rapids, MI



Grape I

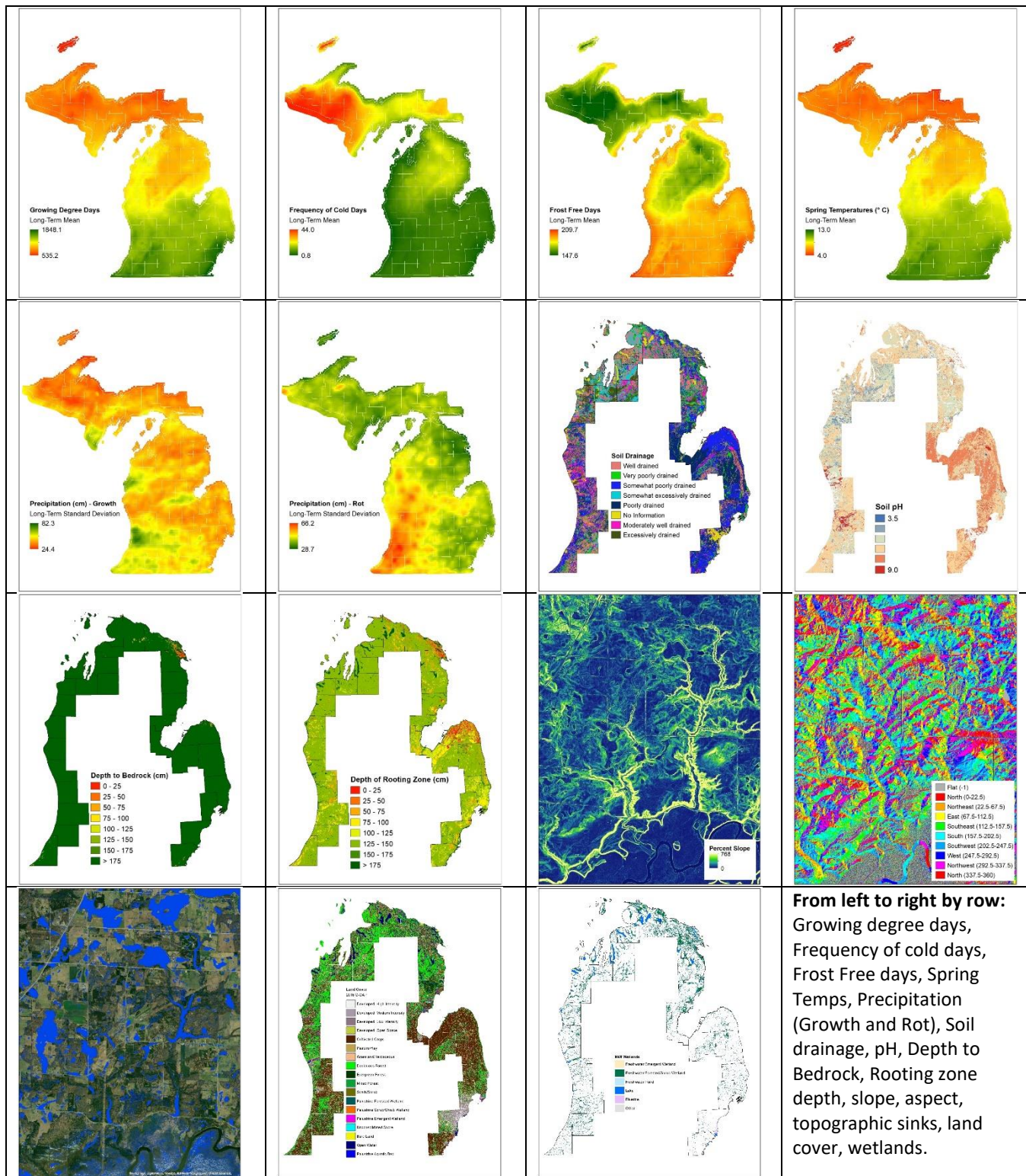
Moderator: Katherine East, Michigan State University Extension

- 9:00 am Whole-canopy Source-sink Balance at Bloom Dictates Fruit-Set and the Impact of Early Leaf Removal
- Paolo Sabbatini, Michigan State University (Department of Horticulture)
- 9:30 am Mapping Vinifera Suitability Across Michigan - Finding the Best Sites
- Erin Bunting, Michigan State University
- 10:00 am Sampling Strategies for Virus Detection
- Laura Miles, Michigan State University (Department of Plant, Soil and Microbiology)
- 10:30 am Spotted Lanternfly: Detection and Management (OH 2B, 0.5 hrs)
- Heather Leach, Pennsylvania State University (Department of Entomology)

Modeling Suitability of Vitis Vinifera Across Michigan

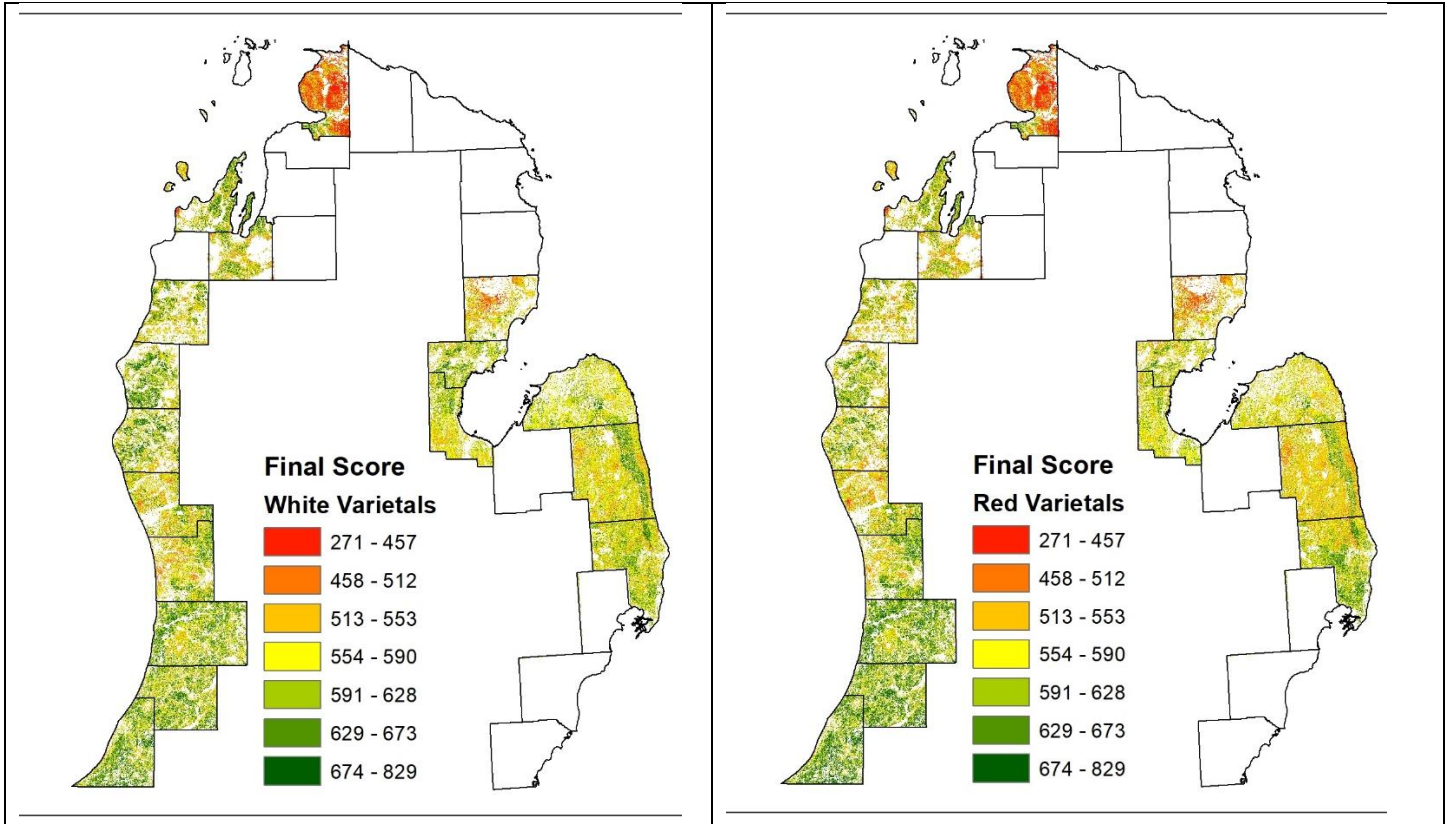
RS&GIS, through a grant from the Michigan State Horticultural Society, developed data and models to precisely map Vitis vinifera site suitability in Michigan. This project benefited from precise geospatial digital data that was previously unavailable as well as rapid mapping technologies, advanced geospatial models and expert industry knowledge. These data are meant to provide growers with useful information for properly siting Vitis vinifera.

A variety of variables were identified as important and used to model suitability. Variable categories included: climate, soils, land cover and topography.



From left to right by row:
 Growing degree days,
 Frequency of cold days,
 Frost Free days, Spring
 Temps, Precipitation
 (Growth and Rot), Soil
 drainage, pH, Depth to
 Bedrock, Rooting zone
 depth, slope, aspect,
 topographic sinks, land
 cover, wetlands.

Results were computed for all areas where precise elevation data was available. County maps were created and are available at <http://www.rsgis.msu.edu/research/vinifera>.



Next Steps:

- Provide access to information through a online mapping application.
- Collect ground truth data through a grower survey.
- Add at least 42 additional counties to the dataset.
- Generate varietal-specific suitability.
- Examine variability of climate variables.
- Research changing suitability due to climate change.

Please **HELP** us gather research data on vineyards! If you are a vineyard operator, please fill out our survey located at:

<https://arcg.is/01zveC>



For more information, contact:

Erin L. Bunting, Ph.D.
RS&GIS, MSU
1407 South Harrison Road, Ste
301
East Lansing, MI 48823

